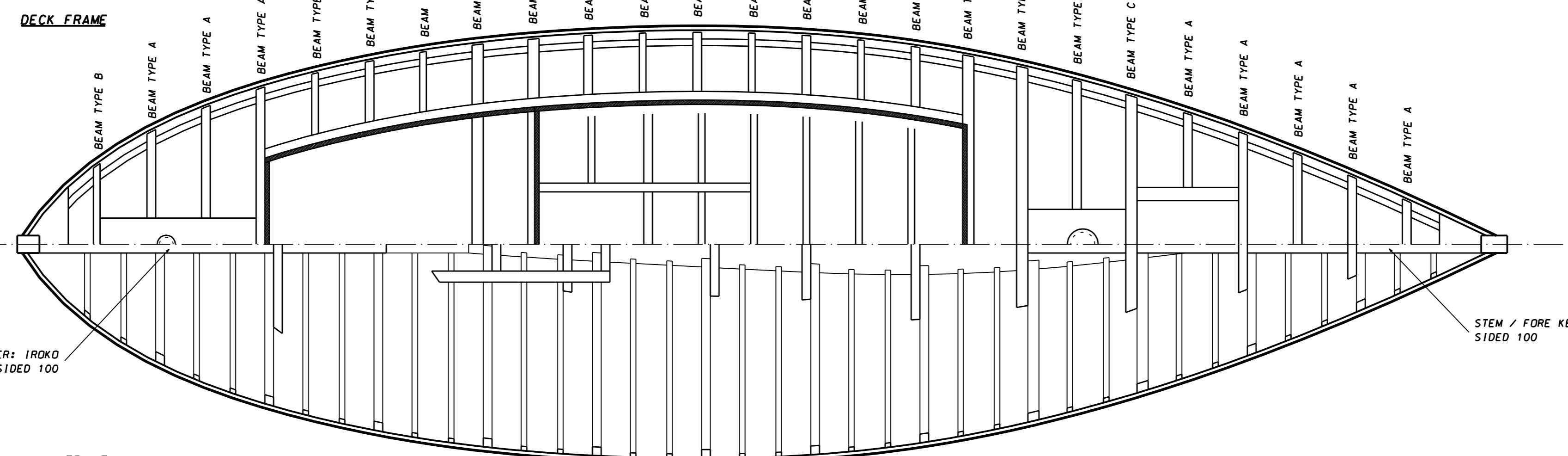


DECK FRAME



HULL FRAME

STERNPOST / HORN TIMBER: IROKO
SIDED 100

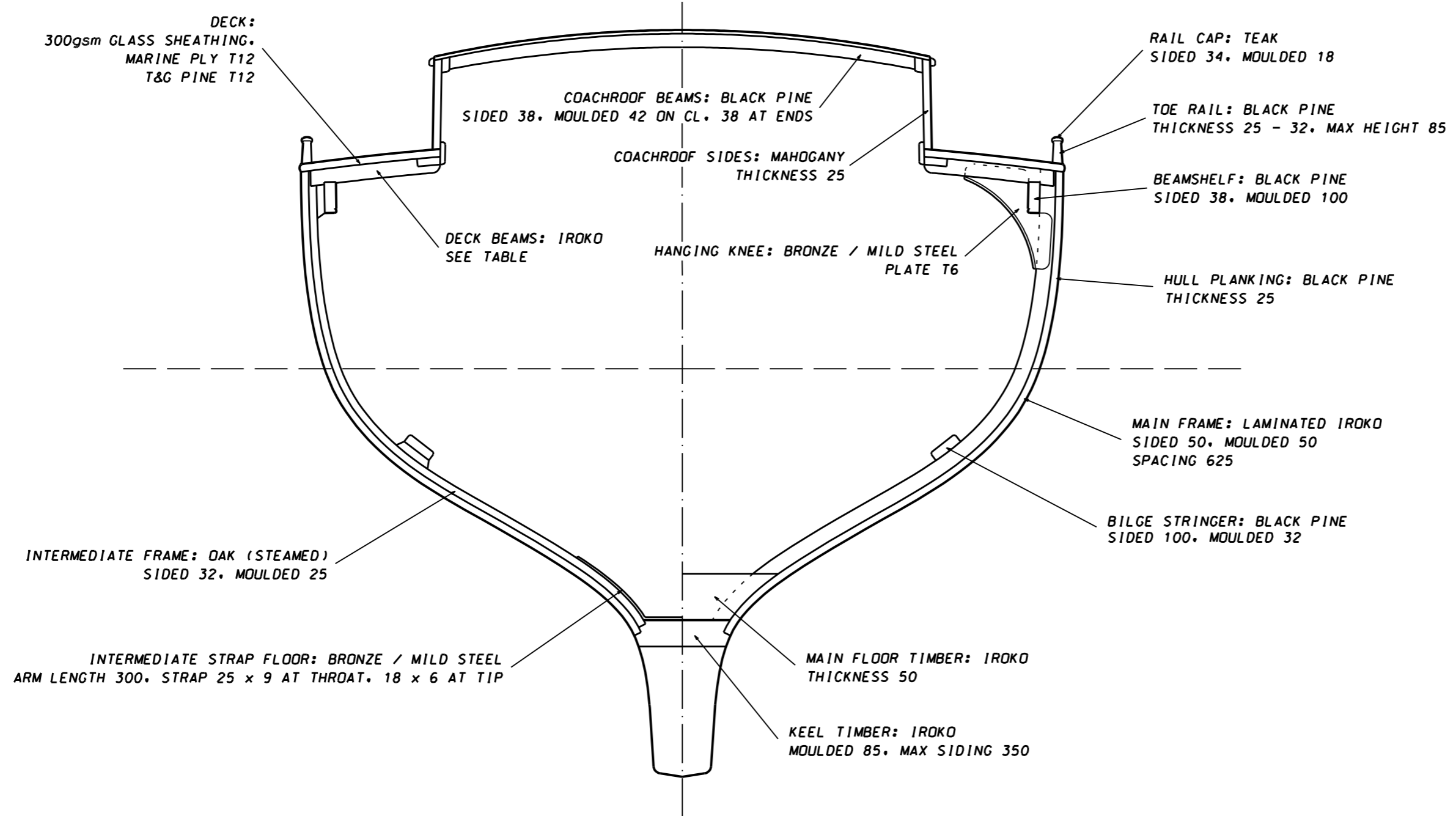
STEM / FORE KEEL: IROKO
SIDED 100

TYPICAL SECTION IN WAY OF INTERMEDIATE TIMBER

SCALE 1:15

TYPICAL SECTION IN WAY OF MAIN FRAME

SCALE 1:15



DECK BEAM SCANTLING

BEAM TYPE	TIMBER	SIDING	MOULDING	
			ON	ENDS
A (STANDARD)	IROKO	50	64	50
B (LIGHT)	IROKO	38	50	50
C (STRONG)	IROKO	64	64	50

NOTES:

1. MAIN FRAMES IN WAY OF MAST TO HAVE SIDING INCREASED TO 64mm.
2. DECK BEAMS TO BE BOLTED THROUGH FRAME HEADS WHERE POSSIBLE.
3. HARDER TIMBER MAY BE SUBSTITUTED FOR GARBOARDS AND SHEERSTRAKES IF DESIRED.

EDWARD. A. BURNETT B.Eng (HONS)
BURNETT YACHT DESIGN
 YACHT DESIGN AND NAVAL ARCHITECTURE
 UNIT 9, DART MARINE PARK,
 STEAMER QUAY, TOTNES, DEVON, TQ9 5AL.
 Tel / Fax: (01803) 868800

PROJECT	28' YAWL	DRAWING NO.	127-21
FOR	CA / STRUC PLAN	SHEET	1 OF 1
DRAWN	E. A. B.	SCALE	1 : 20
CHECKED		DATE	9.1.06

NOTE:
 Possession of this drawing does not constitute permission to build. This drawing is not to be copied, or distributed to anyone not directly involved with the building or the costing process. The designer accepts no responsibility for the consequences resulting from the misuse or alteration and subsequent use of this drawing.